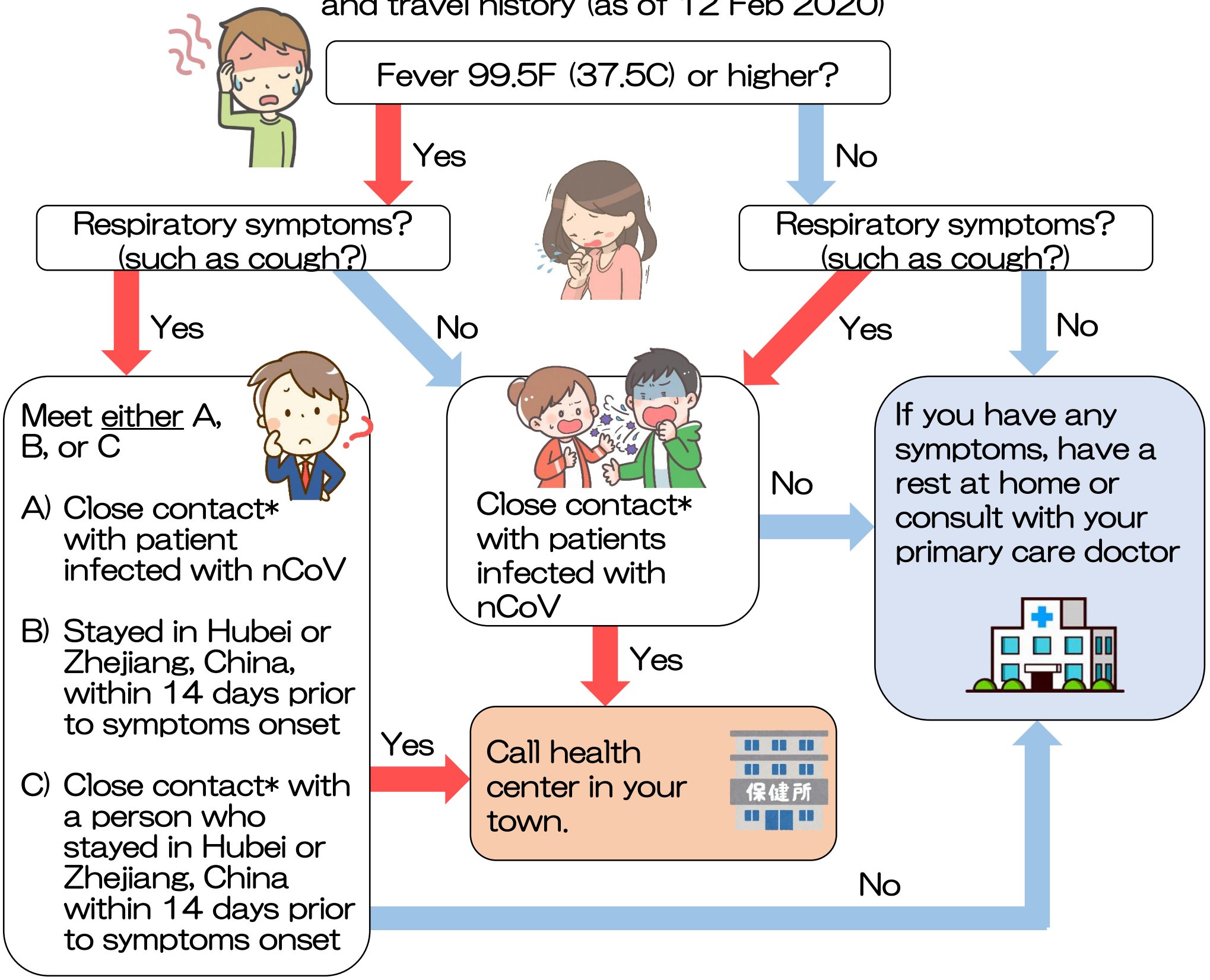


If you think you are infected with COVID-19...

Select "Yes" or "No" from your symptoms, contact history, and travel history (as of 12 Feb 2020)



*Close contact means:

1. Living with the suspected patients or prolonged contact with them (in a car, on an airplane, etc.)
1. Caring for suspected patients without proper PPE
2. Highly likely to have directly touched the patient's sputum or saliva

If you suspect you are infected, first call your local health center (HC) before visiting the hospital. The public health centers will ensure suspected patients will be connected to the proper medical institutions. In some cases, we may ask you to see a general clinic if it is considered appropriate.

| Health Centers | | | |
|----------------|--------------|--------------|--------------|
| North HC | 0980-52-5219 | Miyako HC | 0980-73-5074 |
| Chubu HC | 098-938-9701 | Yaeyama HC | 0980-82-4891 |
| South HC | 098-889-6591 | Naha City HC | 098-853-7971 |