

Onna Village Illustration Map

Onna Village

Area: 50.82km
Population: 11,089人
(As of January 2021)



[Language]



1 Manzamo (Prefectural Designated Scenic Beauty)

The park features a flat meadow that extends to the edge of a 20 m-high Ryukyu limestone cliff. The name is said to originate from the words of the former king of Ryukyu, Shoikei, who praised the place as being "a Mo (field) that is big enough for 10,000 people (Man) to sit (za)." The sunset is also beautiful and shouldn't be missed.



1 Manzamo Tourist Facility

This facility has souvenir shops, restaurants, an exhibition space and an observatory. It is a three-story building with a local specialty corner on the first floor, restaurants and shops on the second floor, and an observatory overlooking the sea on the third floor.



2 Onna Village Seaside Park Nabee Beach

You can enjoy BBQ and marine sports throughout the year at the beach. Protective jellyfish nets are installed from April until the end of October. The beach is located inside a bay so the sea is relatively calm, and you can enjoy swimming safely. The restaurant Kame Nu Hama is located at the beach.



Onna Sunset Coast Road

This is the name given to the North-South 27 km (Ukaji to Nakama) stretch of Prefectural Road 6 and National Route 58, which passes through Onna Village along the sea. Out of numerous recommendations of a nickname from the public, this name was chosen to reflect the beautiful sunset view. The area with this designation was extended in the spring of 2014. The sea area within Onna Village is designated the Okinawa Seashore National Park and at dusk, the clear sky and waters are wrapped in a magical orange hue.



3 Cape Maeda

You can get a great view of the East China Sea from Cape Maeda. The sea right in front of you is crystal clear, which makes the spot very popular among divers. You can also enjoy surf fishing here, too. At the popular diving spot, there are steps leading down into the water.



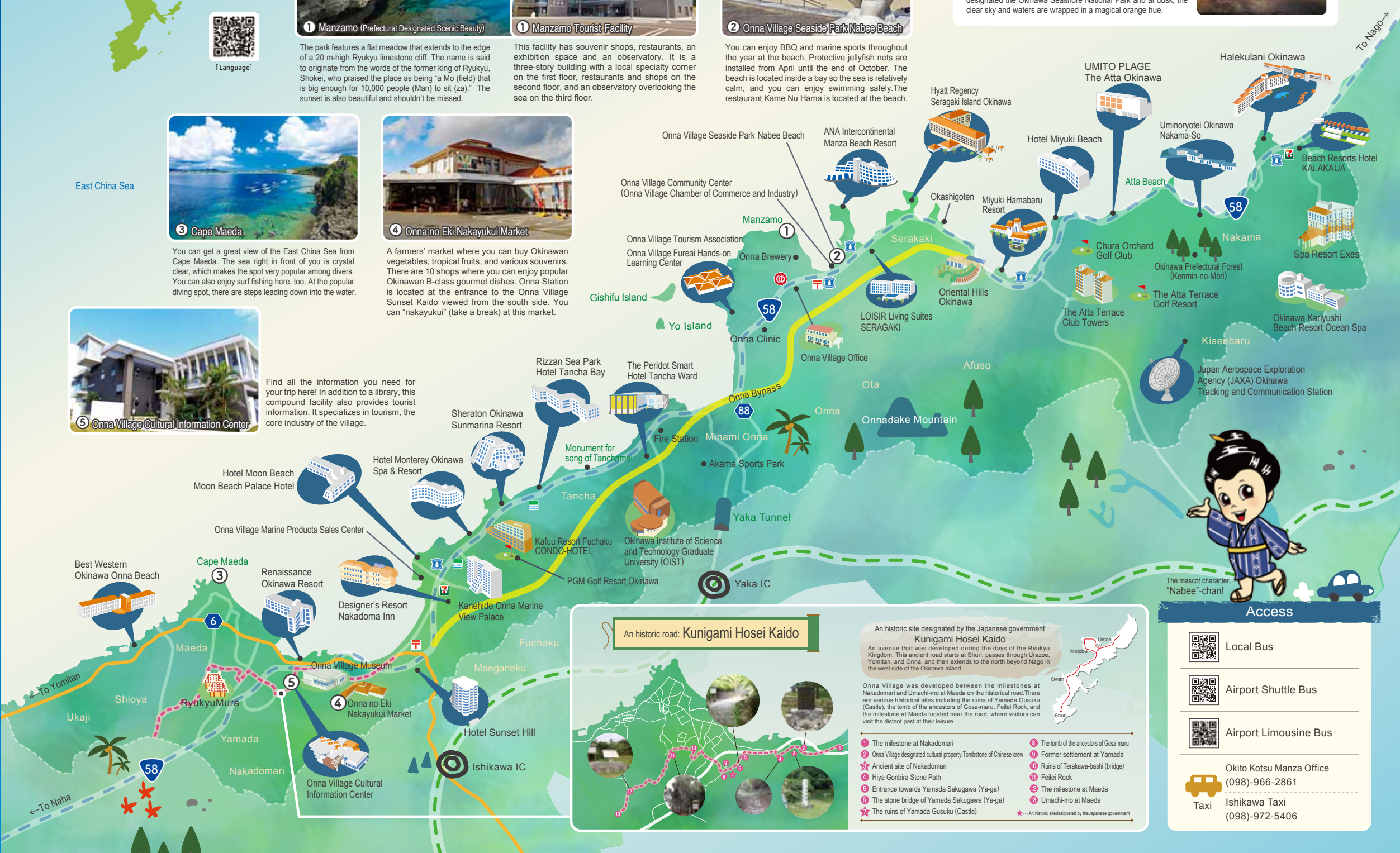
4 Onna no Eki Nakayukui Market

A farmers' market where you can buy Okinawan vegetables, tropical fruits, and various souvenirs. There are 10 shops where you can enjoy popular Okinawan B-class gourmet dishes. Onna Station is located at the entrance to the Onna Village Sunset Kaido viewed from the south side. You can "nakayukui" (take a break) at this market.



5 Onna Village Cultural Information Center

Find all the information you need for your trip here! In addition to a library, this compound facility also provides tourist information. It specializes in tourism, the core industry of the village.



An historic road: Kunigami Hosei Kaido

An historic site designated by the Japanese government

Kunigami Hosei Kaido

An avenue that was developed during the days of the Ryukyu Kingdom. This ancient road starts at Shuri, passes through Urazoe, Yomitan, and Onna, and then extends to the north beyond Nago in the west side of the Okinawa Island.

Onna Village was developed between the milestones at Nakadomari and Umachi-mo at Maeda on the historical road. There are various historical sites including the ruins of Yamada Gusuku (Castle), the tomb of the ancestors of Gosa-maru, Fellei Rock, and the milestone at Maeda located near the road, where visitors can visit the distant past at their leisure.

1 The milestone at Nakadomari	8 The tomb of the ancestors of Gosa-maru
2 Onna Village designated cultural property: Tombstone of Chinese crew	9 Former settlement at Yamada
3 Ancient site of Nakadomari	10 Ruins of Terakawa-bashi (bridge)
4 Hiya Gonriba Stone Path	11 Fellei Rock
5 Entrance towards Yamada Sakugawa (Ya-ga)	12 The milestone at Maeda
6 The stone bridge of Yamada Sakugawa (Ya-ga)	13 Umachi-mo at Maeda
7 The ruins of Yamada Gusuku (Castle)	14 An historic site designated by the Japanese government



Access

- Local Bus
- Airport Shuttle Bus
- Airport Limousine Bus
- Okito Kotsu Manza Office
(098)-966-2861
- Ishikawa Taxi
(098)-972-5406